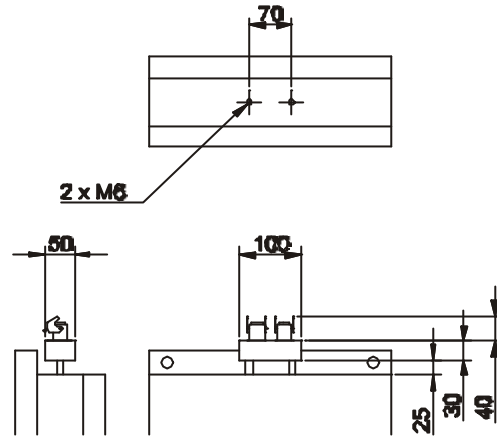


## Mini Junction Box

Connector wiring:

- 1 = T/C+
- 2 = T/C-
- 3 = Heater
- 4 = Return



## Installation Guidelings

- All junction boxes are supplied with a complete mounting set which includes: 4 off 25mm mounting posts, 4 off 6mm x 40mm caphead bolts and 4 off 6mm washers. (2 off of each on Mini Junction boxes)
- The maximum number of zones available from a given Junction Box style is dependant on the cabling / connection standard used.
- Please allow sufficient space around the junction box for the space required to connect the mould tool cables.
- It is recommended that the correct thermocouple extension cable is used for the connection of all thermocouple sensors to retain accuracy.
- Ensure that the correctly rated cable is used for all heater connections.
- Ensure that all power and thermocouple cables are undamaged.
- Ensure that the junction box is securely electrically grounded to the mould tool.
- Any questions? Contact us at: [tech-support@fastheatuk.com](mailto:tech-support@fastheatuk.com) .

**fast heat**

Unit 7, Alder Close Eastbourne, East Sussex, BN23 6QF  
 T: 01323 647375 F: 01323 410355  
 I: [www.fastheatuk.com](http://www.fastheatuk.com) E: [tech-support@fastheatuk.com](mailto:tech-support@fastheatuk.com)

FHD194-V6-0104

# JUNCTION BOX INSTALLATION MANUAL

## Long Style Junction Box



## Short Style Junction Box

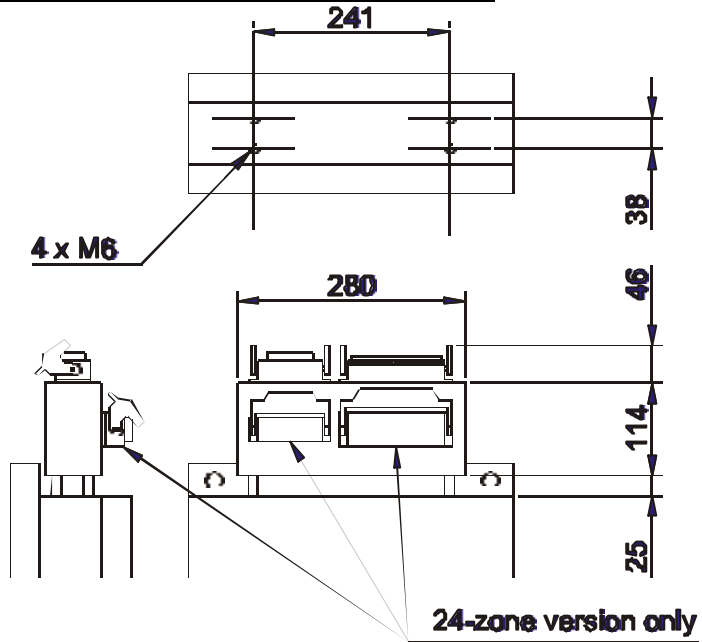
## Double Height Junction Box



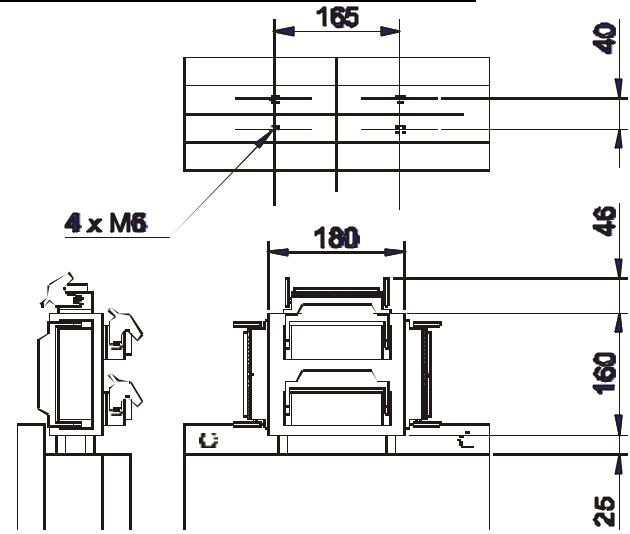
## Mini Junction Box



Long Style Junction Box: Typical Installation

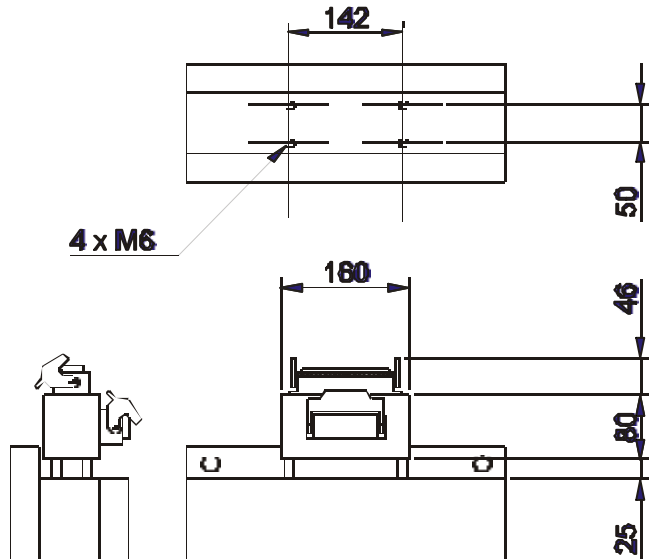


Double Height Junction Box: Typical Installation (1)

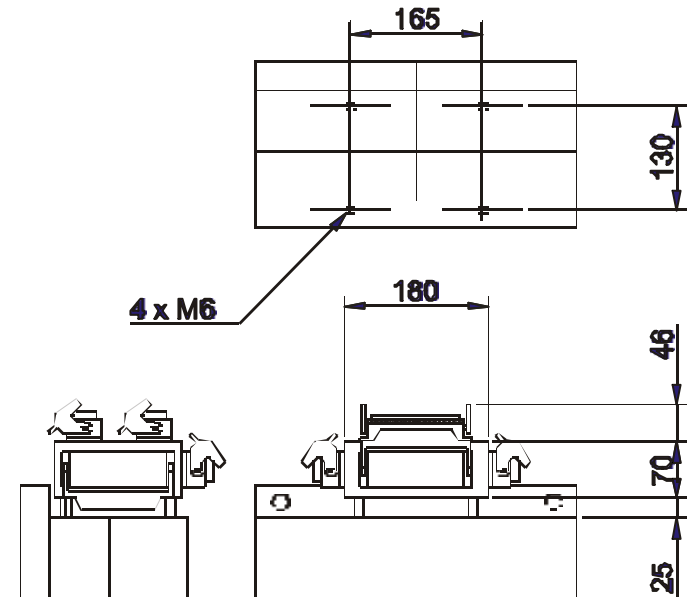


Box mounted along short face permitting up to seven 24-pin connectors to be mounted.

Short Style Junction Box: Typical Installation



Double Height Junction Box: Typical Installation (2)



Box mounted along large face permitting up to six 24-pin connectors to be mounted.